



HP Business Notebooks Gen 11

- Verbessert durch AI

# AI is a continuous innovation journey

TODAY

2025

2026

Elevating the AI experience in the cloud with Win 11 & Copilot

CES & APC (Spring 2024)

Engineered and purpose-built HP AI PCs designed to deliver personalized productivity with local inferencing

Summer 2024

Winter 2024 and Early 2025



# AI use cases are becoming more tangible

Automate busy work to focus on what matters

Summarize documents

Automate meetings

Research the web

Do important tasks better and faster than ever

Auto-create PowerPoint

Build formulas in Excel

Find trends in data

Do what was previously impossible

Real-time translations

Generate images/videos

Instant access to data

# New Waves of innovation to deliver new ways of working

2023



HP Elite 600, 800 & 1000 G10

HP EliteOne 800 G9 AiO Desktop

HP Dragonfly G4

Don't wait to start on your AI journey. Refresh today.

TODAY

HP Amplify - Mar'24 Launch



**+15 TOPs**

Expanding our AI portfolio with the most comprehensive Commercial AI PC launch

2H 2024 - 1H2025

Next-gen AI PC



**+40 TOPs**

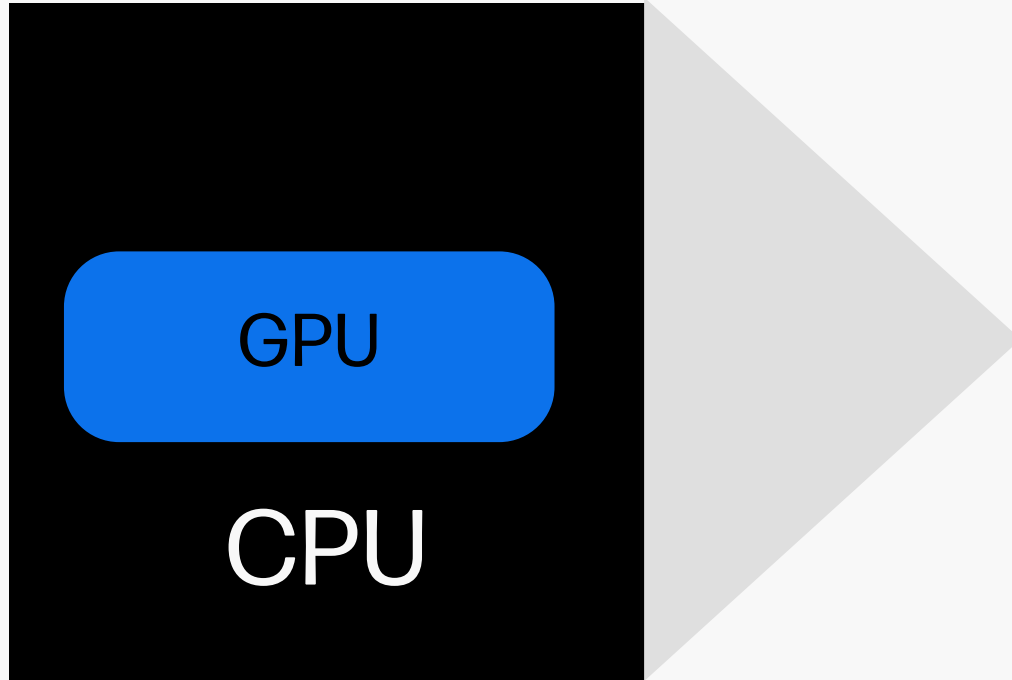
Introducing new local innovations with AI at the core

\*NPU is measured in Tera or Trillions of AI Operations per Second or TOPs

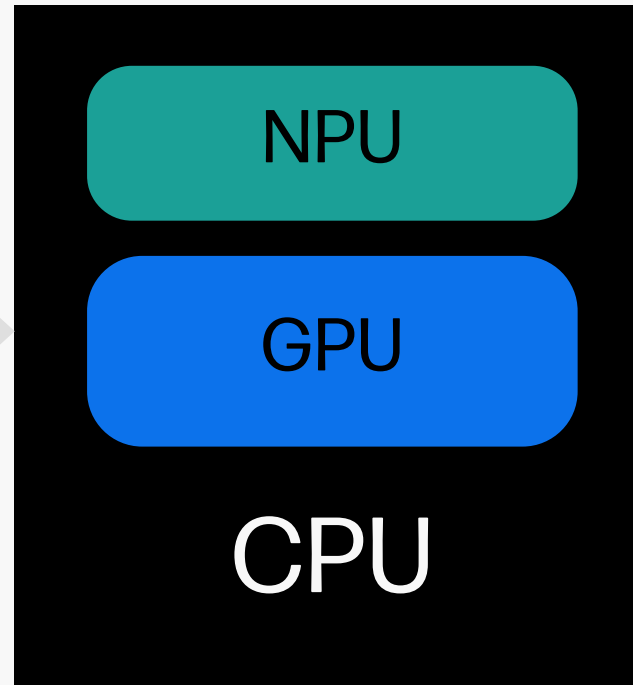
# On Device inferencing is Driving New Silicon Accelerators

NPU best for sustained AI workload at low power

From



To



## NEW! Neural Processing Unit

- Large number of AI cores
- Offloads AI processing from CPU and GPU
- Optimized for high performance per watt

On-device inferencing is driving new silicon accelerators (NPU) for new operations at lower price/performance

Processors with NPU<sup>4</sup> available on EliteBook 1000, 800/805, 600 & ProBook 400 Series

# Enhanced by AI

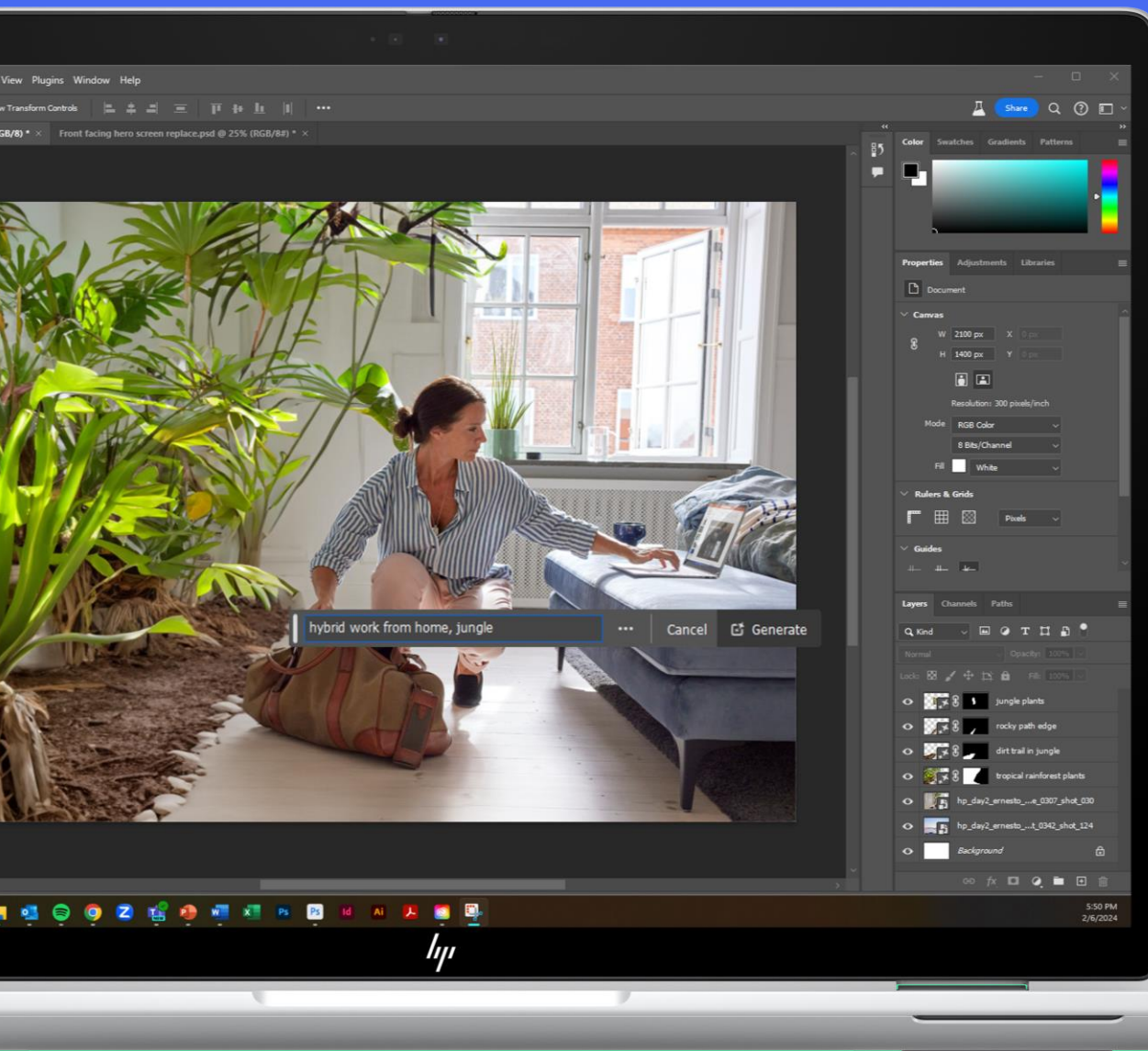
intel | AMD

## 3 productivity engines:

**CPU** - ideal for lightweight, low-latency AI workloads like applying filters in Photoshop

**NPU** - powerful, efficient AI engine for sustained AI tasks like using Windows Studio Effects background blur during a video call. \*

**GPU** - ideal for digital content creation where workload requires more power like Premiere Pro



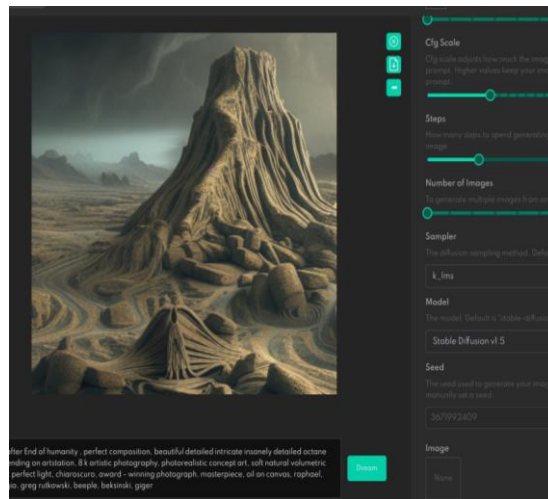
# On-device AI inferencing has multiple benefits

## Faster



Create images and video up to **5X** faster than cloud

## Lower Cost & Energy



Reduce cloud subscription cost

## Secure & Private



Work on sensitive data locally for security and regulatory compliance

## Smarter & Simpler



Optimize system and resolve issues without user intervention

# Key Innovations in 2024

## Hardware



**New HW NPU<sup>4</sup>** offloads AI processing from CPU and enables real-time processing with less power

**New ID** for 400, 600 & 1000 series

**16:10 panels** and **DDR5 memory** offering extended to 400 & 600 series

Next generation **Sure View 5<sup>12</sup>** privacy display option with an improved and secure visual experience

## AI Driven Intelligent Performance



**HP Smart Sense<sup>1</sup>** improvements; available on both Intel & AMD

**Reduced battery draining** with updates to Modern Standby and Intelligent Hibernate

**Real time energy consumption monitoring** and reporting with power usage tracking<sup>5</sup>

## Audio & Video



AI enabled enhanced audio quality with **Poly technology** and **Microsoft Windows Studio<sup>2</sup>** video enhancements

**Dynamic Color tuning<sup>6</sup>** automatically correct color shifts caused by ambient color sources (such as a monochrome background)

**One click pairing** experience with select Poly headsets without the need of a Bluetooth<sup>®</sup> adapter





# 2024 G11 Notebooks



**EliteBook 1000 G11**  
*New design (16:10)*

14" Clamshell & 14" x360



**EliteBook 800/805 G11**  
*CPU refresh (16:10)*

13" x360, 13"/14"/16" Clamshells



**EliteBook 600/605 G11**  
*New design (16:10)*

13"/14"/16" Clamshells



**ProBook 400/405 G11**  
*New design (16:10)*

14" & 16" Clamshells

AMD Hawk Point in 805

AMD Rembrandt Refresh in 605 & 405

Intel Meteor Lake Available Across EliteBooks & ProBooks\*

## Key Facts & Information

SKU				
Availability	Juni	Juni	Juni/Juli	Juni/Juli
Warranty + Extensions	3-3-0	3-3-0	1-1-0	1-1-0
Security	1 Year Wolf Pro Security	1 Year Wolf Pro Security	1 Year Wolf Pro Security	1 Year Wolf Pro Security



# One-touch

# privacy

**Improved battery life**  
Up to 90 minutes more  
than with Sure View  
Reflect<sup>2,4</sup>

**Natural privacy  
experience**  
Brighter display with  
higher contrast

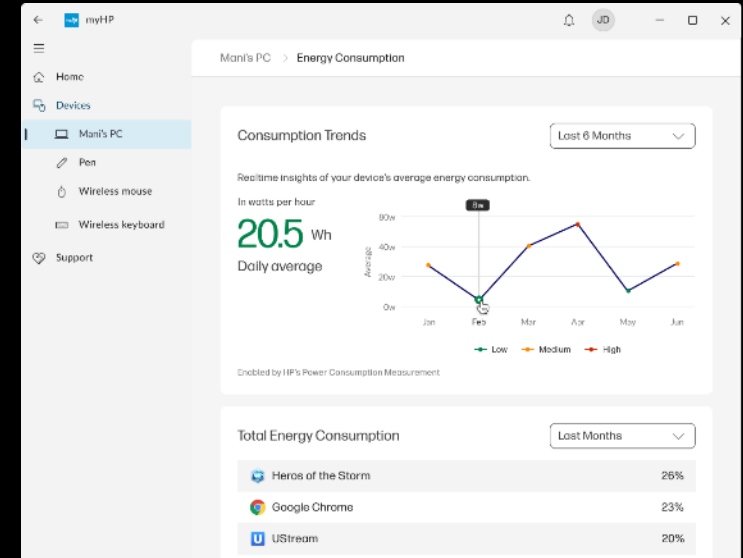
Animation is an illustration, results may vary.

Work protected  
with HP Sure View<sup>VR</sup>

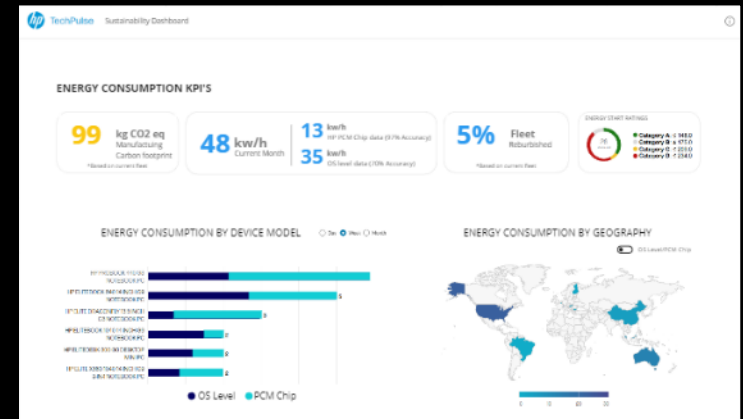


# Enabling smart PC usage

See power usage and get recommendations to reduce energy use with a real-time power consumption dashboard.<sup>7</sup>



For end users:  
Power Consumption Measurement in myHP

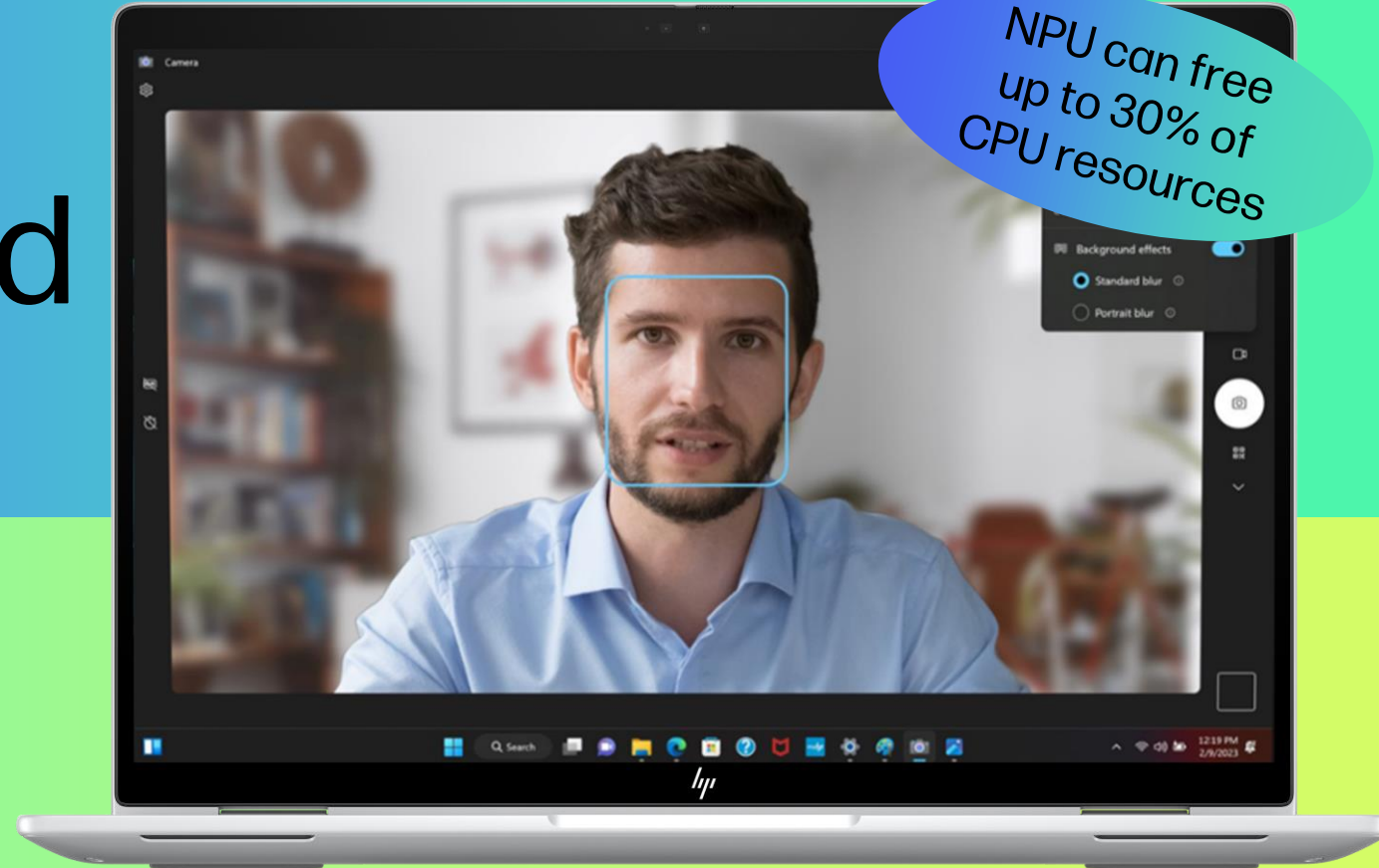


For ITDMs:  
IT Energy Dashboard in HP Proactive Insights

All screen views are illustrations and may not be representative of final dashboard.

# HP's AI makes you look and sound better than ever

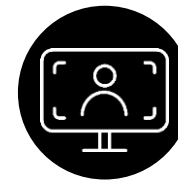
- HP Poly Studio audio tuning for crystal-clear meetings
- NPU-powered Windows Studio Effects<sup>13</sup> for real-time AI enhancements



Background effects such as background blur



Eye contact compensates for eyes looking at the screen instead of the camera



Automatic framing automatically zooms and crops as you move around

# Fine tune the bigger picture

Dynamic Color Tuning<sup>10</sup> senses ambient light for improved white balance



# 2024 Portfolio - Step Up Path

## HP 205 G10 HP 200R G9

G9 REFRESH  
(Intel)



- Essential business features and processor technology

## ProBook 400/405 G11



Affordable devices designed with commercial grade feature; durable design.

- Aluminum A/C chassis
- HP Sure Run & Sure Recover
- Higher level of MIL-STD durability
- Two multifunction USB Type-C®

## EliteBook 600/605 G11



Bringing premium to all employees across all hybrid workstyles. Enterprise security, manageability, and configurability.

- Management w/ Intel vPro & vPro Essentials/AMD DASH
- Smart card / NFC option
- Up to 64GB DDR5 / 2TB SSD
- Thunderbolt™ (Intel only)
- Privacy panel
- Global series

## EliteBook 800/805 G11



Gold standard for enterprise, setting the bar with performance, connectivity, collaboration.

- More compact chassis
- Enhanced collaboration
- Enhanced audio & discrete amps
- 5G connectivity
- Dynamic color tuning
- Ambient light & color sensors
- Embedded Sure Recover
- QHD+ OLED panel option
- Intel EVO

## EliteBook 1000 G11



Ultra lightweight devices for the freedom to work and truly collaborate from anywhere.

- NEW distinctive ID & color
- Super light weight
- 68Whr battery
- Performance boost up to 35W TDP
- Three USB Type-C® ports
- Serviceability with screwless battery
- HP Auto Lock and Awake

G9R: 14"/15" Plastic chassis, G10: Opt metal A cover, Clamshell	14"/16" Aluminum A/C covers Clamshell	13/14/16" Aluminum A/C/D covers Clamshell	13/14/16" Aluminum (WLAN) & Magnesium A Cover (WWAN) Clamshell & x360	14" Magnesium Clamshell & Aluminum x360
G9R: Intel 15W G10: Intel 6W/15W/28W and AMD 15W	Intel and AMD 15W 28W (Intel only)	Intel and AMD 15W 28W(Intel only)	Intel and AMD 15W 28W	Intel 15W 28W
16:9 Display, HD panel baseline	16:10 Display, 300n baseline	16:10 Display, 300n baseline	16:10 Display, 300n baseline	16:10 Display, 400n baseline
HD TNR Camera or FHD (G10 Option)	FHD or 5MP Camera	FHD or 5MP Camera	5MP Camera 88° FOV	5MP Camera 88° FOV
DDR4 Memory	DDR5 Memory	DDR5 Memory	DDR5/LPDDR5X Memory	LPDDR5X Memory
Wi-Fi 6 WLAN	Wi-Fi 6E WLAN / 4G WWAN	Wi-Fi 6E WLAN / 4G WWAN	Wi-Fi 6E WLAN / 5G WWAN	Wi-Fi 6E & Wi-Fi 7 WLAN / 5G WWAN





# There is excitement for the future of work with AI

**58%** of knowledge workers say AI will make their job easier

**55%** say AI will open up new opportunities to enjoy work





# AI purchasing power

**65%** Of enterprise ITDMs say they are likely to get funding for AI tools.

**59%** of enterprise ITDMs say AI compatibility is the driving factor in refreshing PCs.





# AI PC today

- Any NPU
- Copilot Key<sup>8</sup>



# Next-Gen AI PC<sup>1</sup>

- 40-60 TOPS NPU
- Purpose-built for knowledge creators to do more with local AI
- Meets Microsoft Copilot+ PC standards



Designed for the



AI revolution.

# Introducing HP's Next-Gen AI PCs

# EliteBook Ultra series

## Designed to optimize the potential of AI

Includes a **45 TOPs NPU<sup>23</sup>** (trillions of operations per second) that's powerful enough to help AI think & act fast

## Built with the future of AI in mind

Architected to support the use of **AI locally** on the device

## Meets Microsoft's Windows Next-Gen AI PC standards

**Built to meet** performance, memory, security & design guidelines






# Something for everyone in the new era of AI



June 2024



Pro	Elite		1000 Series	Ultra
<b>400 Series</b>	<b>600 Series</b>	<b>800 Series</b>	<b>1000 Series</b>	
Power, style and value for growing companies	Build the right configuration for your business	AI-powered gold standard for enterprise	Strong security, ultra-light and responsibly crafted, with AI acceleration	Intentionally designed to optimize the use of AI, enabling innovators to thrive in the new era of AI
intel. 440 / 460 G11 14" / 16" diagonal	intel. 630 / 640 / 660 G11 13" / 14" / 16" diagonal	intel. 830 / x360 830 / 840 / 860 G11 13" / x360 13" / 14" / 16" diagonal	intel. 1040 / x360 1040 G11 14" / 14" diagonal x360	  14" diagonal clamshell 
AMD 445 / 465 G11 14" / 16" diagonal	AMD 645 / 665 G11 14" / 16" diagonal	AMD 835 / 845 / 865 G11 13" / 14" / 16" diagonal		
	Small businesses	Public sector		Tech-forward knowledge creators
		Enterprise		
AI PC - 15 TOPS in all devices <sup>55</sup> (AMD only on 805 series) <sup>55</sup>				Next-Gen AI PC - 40+ TOPS <sup>1,39</sup>

